

**ENSTO**

# Ensto Modulo

IP65 Watertight distribution enclosures



Score your goal  
with Ensto Modulo

# Tough enclosures for the harshest environments

Ensto Modulo is an entirely new range of durable and innovative distribution enclosures. Ensto Modulo protects your electronic equipment from external risk factors, among them dust, water, moisture, impacts and tampering. Thanks to their high degree of protection and impact strength, Ensto Modulo is able to with-

stand the harshest environments and to tackle the most demanding installations.

Ensto has a broad experience in creating enclosing solutions for many applications and segments. Below are some examples of applications in which Ensto Modulo enclosures are typically used.





## Benefits



Cost-efficient and easy



Outstanding technical features



Elegant and flexible design



Certified and tested by VDE



# Ensto Modulo distribution enclosures

Ensto Modulo is a distribution panel enclosure for low-voltage switch-gear and control gear assemblies with a completely stylish and innovative shape, reaching the highest level of quality and design.

Tested by the well-known Testing and Certification Institute (VDE), the product fulfils the requirements of IEC 62208:2011, 2nd Edition, DIN EN 62208:2012; EN 62208:2011.

The hinged smoke gray transparent window provides outstanding UV protection and an opening angle up to 180°. Ensto Modulo enclosures have a large space for different metric knock-outs for wiring. The possibility to place the DIN rail at two height positions and assembling the rail using only one screw, makes the installation easy and comfortable.

## Ensto Modulo in brief:

- Available in 9 sizes, capacity for 4 to 54 modules
- Factory installed DIN-rails, earth and neutral bars
- Factory made metric knockouts from M20 to M40
- Removable DIN-rail chassis for models with two or more rows
- Sealed screws at four points for easy installation

## Technical information

Degree of protection	IP65
Impact resistance (-25 °C ... +40 °C)	IK08 (5 J)
Auto-extinguishing degree	UL94 HB
Protection Class	II
Glow wire test	650 °C
Service temperature (empty boxes)	-25 °C ... +70 °C
Maximum voltage (empty boxes)	1000 V AC / 1500 V DC
Earth and Neutral bars	500 V / 125A

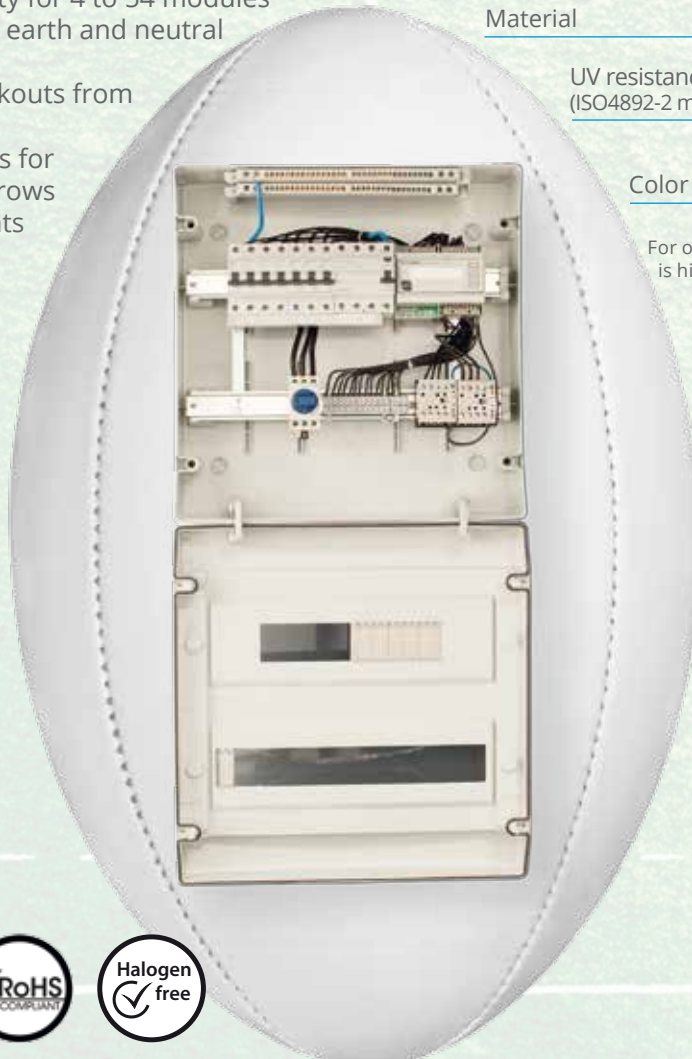
## Body

Material	ABS
UV resistance (ISO 4892-2 meth. A)	500 hour
Color	Grey, RAL 7035

## Window

Material	Polycarbonate
UV resistance (ISO4892-2 meth. A)	1000 hour
Color	Transparent, smoke grey

For outdoor use an enclosure of polycarbonate is highly recommended, available on request.





Metric knockouts as standard makes drilling on/off-site obsolete. Ensto has a wide range of plastic enlargers and reducers.



Window is hinged. This means that the opening direction can be changed quickly and safely.



Door can be supplemented with key lock (MODKL3) or triangle locks (MODKL2).



Earth and Neutral bars at double height, section 12 x 6.5 mm are factory installed.



Condensed water may form in high IP enclosures due to different temperatures. Consider the use of a breather device or drain (BVD22 or DWP1).



Joining enclosures is easy. A channel for wiring is possible with a joining kit for mounting enclosures horizontally (MODB25M) or vertically (MODB40M).



Internal hinges for large enclosures (MODHI2) allows the entire door to hang. See the example picture on page 4.



DIN-rails can be installed into two height positions. Fixing requires only one screw.

## Ensto Modulo distribution enclosures, ABS

Product code	Description	Dimensions (mm)			Weight (kg)	Package size (pcs)	GTIN-13
		Width	Height	Depth			
MODAB41PN	Distribution enclosure 4 modules	166	231	113	0.722	1	6438100196226
MODAB61PN	Distribution enclosure 6 modules	202	231	113	0.762	1	6438100196233
MODAB81PN	Distribution enclosure 8 modules	238	231	118	0.929	1	6438100196240
MODAB121PN	Distribution enclosure 12 modules	310	246	148	1.415	1	6438100196257
MODAB181PN	Distribution enclosure 18 modules	418	286	148	1.879	1	6438100196264
MODAB242PN	Distribution enclosure 24 modules	310	436	148	2.357	1	6438100196271
MODAB362PN	Distribution enclosure 36 modules	418	436	148	2.918	1	6438100196288
MODAB363PN	Distribution enclosure 36 modules	310	586	148	3.098	1	6438100196295
MODAB543PN	Distribution enclosure 54 modules	418	586	148	3.949	1	6438100196301



MODAB41PN



MODAB121PN



MODAB242PN



MODAB543PN

## Accessories

Product code	Description	Weight (kg)	Package size (pcs)	GTIN-13
MODHI2	Base frame inner hinge	0.005	12	6438100197094
MODKL2	Lock triangle 2 units with key	0.018	1	6438100197100
MODKL3	Security key lock	0.038	1	6438100197117
MODB25M	Bushing joining enclosures 25M	0.017	1	6438100197124
MODB40M	Bushing joining enclosures 40M	0.025	1	6438100197131
MODKL1	Standard lock	0.012	10	6438100197148
MODHI1	Hinge, spare part	0.002	12	6438100197155

## Spare parts

Product code	Description	Dimensions (mm)			Weight (kg)	Package size (pcs)	GTIN-13
		Width	Height	Depth			
MODD041	Transparent door 4 modules	170	150	30	0.092	1	6438100197759
MODD061	Transparent door 6 modules	200	150	30	0.115	1	6438100197766
MODD081	Transparent door 8 modules	240	150	30	0.129	1	6438100197773
MODD121	Transparent door 12 modules	310	170	30	0.202	1	6438100197780
MODD181	Transparent door 18 modules	420	170	30	0.249	1	6438100197797
MODD242	Transparent door 24 mod 2r	310	320	30	0.375	1	6438100197803
MODD362	Transparent door 36 mod 2r	420	320	30	0.526	1	6438100197810
MODD363	Transparent door 36 mod 3r	310	470	30	0.556	1	6438100197827
MODD543	Transparent door 54 mod 3r	420	470	30	0.742	1	6438100197834



MODHI2



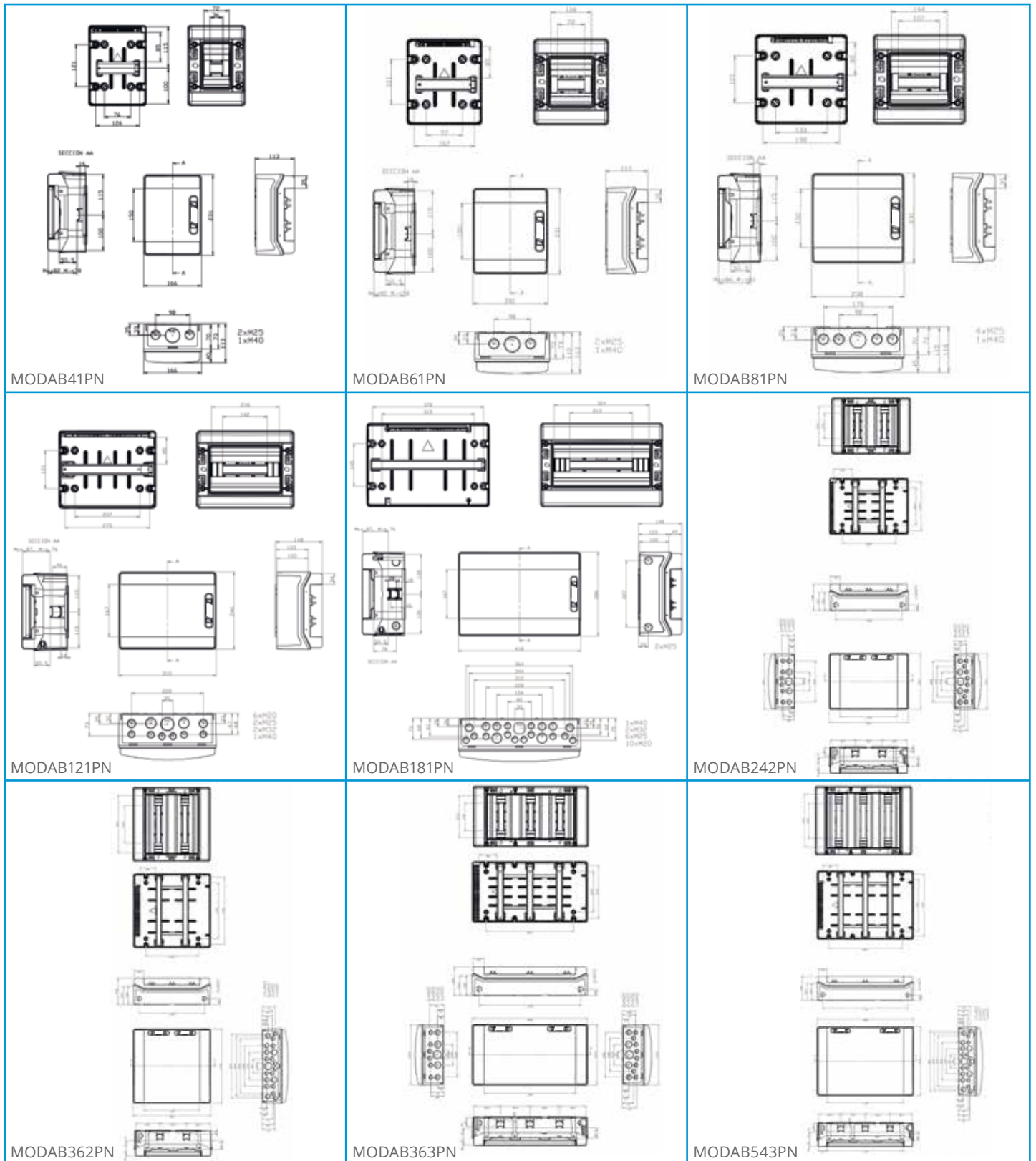
MODKL3



MODB25M



MODKL1



## Legal notice

The information in this brochure is to the best of Ensto's knowledge and belief correct and reliable. We reserve the right to make changes in the specifications, materials and production methods without further notice. Be aware of that you have to evaluate independently the suitability of each product for the intended application. Ensto does not give any assurance of any particular quality or performance. Our responsibilities for the products are set forth in the "Orgalime S 2000 General Conditions for the Supply of Mechanical, Electrical and Electronic Products". The products shall be installed only by a competent person having nationally required knowledge. Ensto is not responsible for its distributors or for any misuse, incorrect installation or ignored national safety or other national provisions.

Copyright Ensto Oy 2017, Ensto™

## Ensto

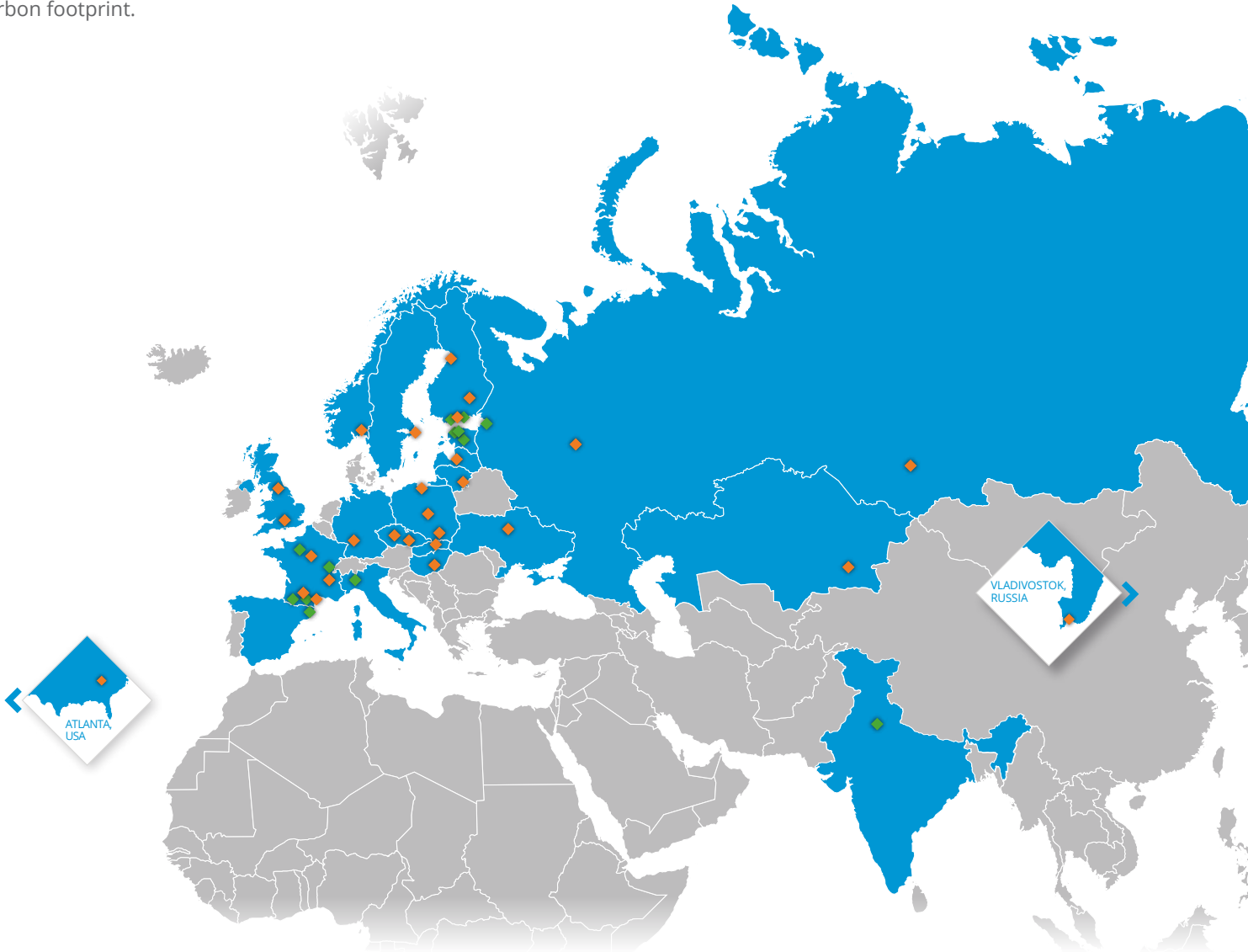
Ensto is a family business and international cleantech company specializing in the development, manufacture and marketing of electrical systems and supplies for the distribution of electrical power as well as electrical applications. We are committed to lasting sustainable development and our goal is to be the world's leading company in green energy efficiency and distribution. Our products, manufactured in seven different countries, are environmentally friendly, energy efficient and leave a minimum carbon footprint.

## Facts

- Established in 1958
- 1600 people in Europe, Asia and Americas
- Local presence in 20 countries
- Turnover EUR 263 million
- Headquarters located in Finland.

## Cleantech

Cleantech refers to all those products, services, processes, and technologies which prevent or reduce the impact of harmful actions on the environment. Cleantech stands for higher quality, efficiency, and profitability. Ensto and other Finnish companies are already world leaders in several key cleantech sectors.



**Ensto Finland Oy**  
Ensio Miettisen Katu 2, P.O. Box 77  
FIN-06101 Porvoo, Finland  
Tel. +358 204 76 21  
electrification@ensto.com

[ensto.com](http://ensto.com)

